

North Metro GNETS Newsletter



October 2022

Director's Corner

Monthly North Metro GNETS Eggs and Issues Updates

Team North Metro GNETS,

In July 2022 the Department of Education's Office for Civil Rights (OCR) and the Office of Special Education and Rehabilitative Services (OSERS) released new guidance that helps schools support students with disabilities and avoid discriminatory use of discipline. U.S. Secretary of Education Miguel Cardona stated *"all students deserve to have their rights protected, and schools deserve greater clarity on how they can avoid the discriminatory use of discipline"*. Cardona also stated that *"too often, students with disabilities face harsh and exclusionary disciplinary actions at school"*. The guidance is extensive and it will help schools live up to their legal obligations, support an equitable recovery for all students, and make sure that all students with disabilities get the behavioral supports and special education services they need to thrive. Some of the areas addressed are:

- Obligations to Meet the Needs of Eligible Children with Disabilities under IDEA
- An Overview of IDEA's Discipline Procedures
- Change in Placement
- Interim Alternative Educational Setting (IAES)
- Manifestation Determination Review
- IDEAs Requirements for FBAs and BIPs

In order to read the new guidance in more detail please click on the link below and read "Questions and Answers Addressing the Needs of Children with Disabilities and the Individual with Disabilities and the Individuals with Disabilities Education Act (IDEA) Discipline Provisions" so we can make sure all of our North Metro GNETS students are receiving their rights and protections under IDEA.

<https://sites.ed.gov/idea/files/ga-addressing-the-needs-of-children-with-disabilities-and-idea-discipline-provisions.pdf>

Cassandra Allen Holifield, PhD, RBT

Director, North Metro GNETS

<https://nmgnets.org/>

<https://twitter.com/nmgnets?lang=en>



October 2022:

- Complete all NM GNETS IEP & Compliance Modules by November 30, 2022 (Extended Deadline)
- Enter all October DOW data prior to October 31, 2022
- Complete all student packets due this month

Upcoming:

- Georgia Educator Summit with Curriculum Associates/Ready – November 17, 2022

Trauma Informed Care Update



Month	Solution	Training Topic	Week	Video	Discussion	Tool
Oct	PS		Week 1 & 2	Self-Management Time: 5:21	How do you recognize when you are experiencing stress? What strategies do you use to manage stressful or challenging situations and keep going when difficulties arise? Which of your strategies might be helpful for your students?	Educator Wellness: Self-Care Exercise Series (PDF) Focus on Spiritual Wellness
		Foundational Videos		Regulation Strategies Time: 9:29	What is the difference between “top-down” and “bottom-up” control? How would you explain each one of these to a student?	Trauma-Informed Exercise Series (PDF) Self-Regulation: Parts 1 & 2
	Concepts in Action	Week 3	Helping a Student Regulate Time: 5:29	Why do you think it’s important to make sure a student is regulated before you engage in problem-solving or confrontation?		
			Quick Regulation Strategies Time: 3:24	Why do you think managing your own stress response might help another person with their regulation?		

- See above for discussion questions related to assignments (platform still not working)

Curriculum, Instruction, and Compliance Coordinator Updates:

Welcome to October! The beginning of the year i-Ready Diagnostic window is closed. Students should be completing their 45 minutes a week in Reading and 45 minutes a week in Math. Please ensure that you are monitoring students progress and pass rates so that you can intervene and provide additional support when needed. Data binders for all IEP goals and objectives for each student should be set up and data should be entered weekly. The 2nd Data Binder Check is due by October 10th. All IEP objectives should be entered into Catalyst for all students on GAA. Please make sure you are receiving, checking, and responding to any Smart Sheets emails regarding the IEP process. All draft IEP’s should be completed and checked prior to sending them home to parents. All parents should receive a draft IEP 1 week prior to the scheduled IEP meeting. All middle and high school students should be in their Edgenuity classes and using Edgenuity as part of the blended learning model.

Curriculum, Instruction, and Compliance Tip of the Month: What is SDI

<https://www.marylandlearninglinks.org/what-is-specially-designed-instruction/>

Reintegration Planning, Transition, & Pathful Explore Updates/Reminders:

Look out 22-23 School Year!

Transition and Reintegration Planning will NEVER be the SAME!

The GNETS Program will be implementing *Pathful Explore* a new online Career Exploration platform that provides students with access to different career options. Career exploration is the process of discovery and research needed to understand the world of career options, usually guided by career exploration curriculum and online tools.

Pathful Explore is a platform where career education is provided to an individual the opportunity to enter a workplace to observe an employee to gain a real-world understanding of a specific career. The observer witnesses day-to-day duties, workplace conditions, necessary skills and other career details they cannot get from a job description. Job shadowing provides a valuable perspective that can confirm career interests, break down job misconceptions and empower individuals to engage in a career path.

Do you know. . .

- Why should students have a well developed transition plan?
- How often should a transition plan be developed?
- Who is responsible for creating and implementing a student's transition plan?

Guiding Questions for students when developing a transition plan:

Grade 7: What does "career" mean to me?

Grade 8: What are my strengths and skills? What subjects interest me?

Grade 9: What types of jobs are out there for me?

Grade 10: What are my options when I leave school?

Grade 11: What can I do to achieve my career goals?

Behavior Specialist Coordinators Updates:



Mindset

Collaborative GNETS Mindset Training October 18 – 19, 2022 from 9:00am – 4:00pm at Ash St. Center (5277Ash St. Forest Park GA 30297)

- Please email Derrick Belford (Derrick.n.belford@clayton.k12.ga.us) or Zina Welch (Zina.Welch@clayton.k12.ga.us) to sign up or send new staff

MINDSET
Tenets **M**

Punitive measures are not appropriate while dealing with aggressive behavior.

Emphasize everyone's strengths to maximize a safe environment.

A crisis situation is a learning opportunity.

Consistency is essential.

Empowerment fosters learning and trust.

The graphic is a vertical rectangle with a light blue top section and a white bottom section. The top section contains a logo with a green hill, two white trees, and a blue sky, next to the text "MINDSET Tenets M" where "M" is a large, stylized letter with a ladder-like structure. The bottom section lists five tenets, each starting with a large, bold letter: P, E, A, C, E.

• Behavior De-escalation

Behavior Contracts:

- Work best for students who struggle with continuous misbehavior and do not respond to redirection and prompts
- Includes the student in the development and implementation of the behavior contract
- A behavior contract should include the following:
 1. Target behavior(s) and the goal(s) for the behavior(s)
 2. People involved in administering the contract
 3. How and when the behavior(s) will be measured
 4. Reinforcers available and a schedule for delivering them
 5. Can include consequences for failure to meet behavior goals, consequences for engaging in challenging behavior(s), and a bonus clause for exceptional performance
- Can be developed for individuals, groups of students, or the whole class

Behavior Contracts

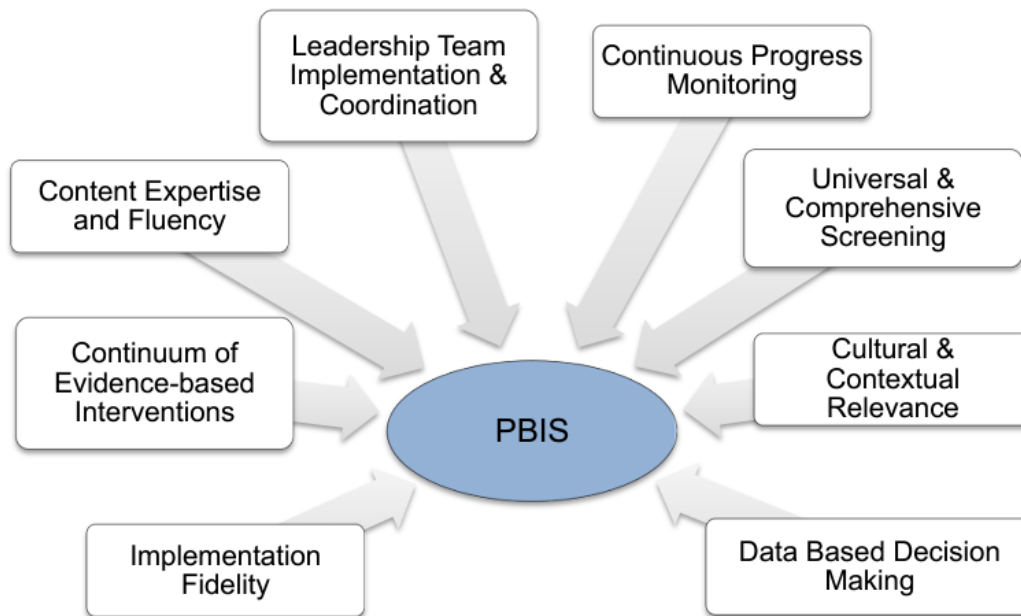
The image shows two identical behavior contract templates side-by-side. Each template is titled 'BEHAVIOR CONTRACT' (left) and 'BEHAVIOR CONTRACT TEMPLATE' (right). Both templates include the following sections:

- Header:** NAME, DATE, LOCATION, WRITER BY
- Target Behavior:** I _____ will (will not) _____
TARGET BEHAVIOR (describe behavior)
- Consequences:** BEHAVIOR CONSEQUENCE (describe consequences)
- Tracking Table:** A table with columns for WEEK, TIME, and days of the week (MON, TUE, WED, THU, FRI, SAT, SUN).
- Footer:** NAME, SIGNATURE, DATE, and a section for 'BEHAVIOR CONTRACT REVIEW'.

PBIS at North Metro GNETS

PBIS CORE FEATURES AND PRACTICES

The PBIS logic is linked to the response-to-intervention (RtI) and multi-tiered support systems (MTSS) approaches. In general, PBIS, MTSS, RTI, and MTBF share the following core features:

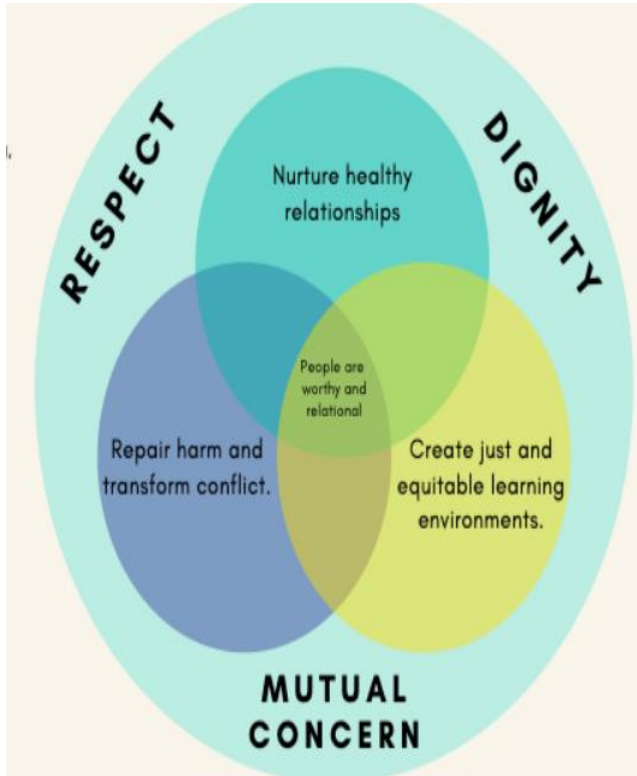
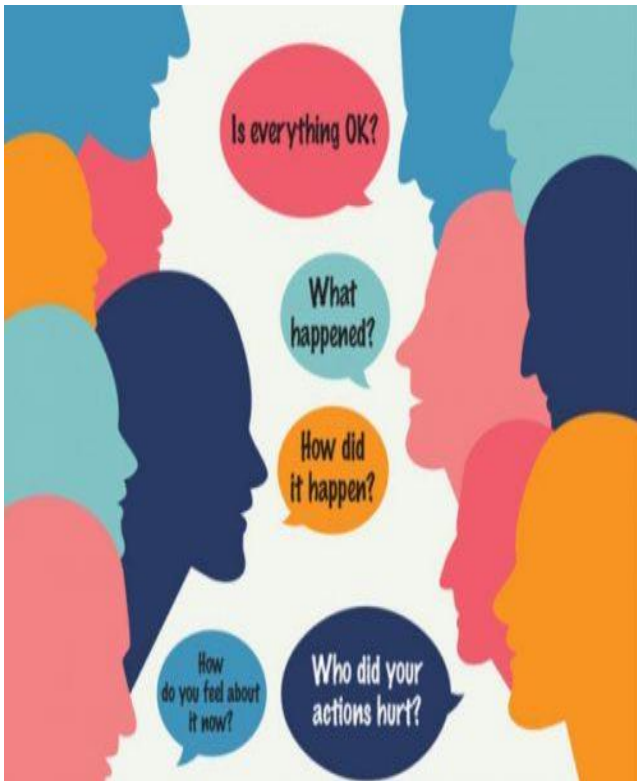


Reminders:

- SAS window is open for everyone until October 27, 2022 😊
- SAS should be completed by October 27, 2022
- TFI window will open October 31, 2022
- PBIS meetings should be monthly

NORTH METRO GNETS MONTHLY MOTIVATION CORNER

“Restorative Practices” are simple when you care about people and relationship building.



Special Announcements & KUDOS!

GREAT TEACHING IN NORTH METRO GNETS at Feldwood Elementary!
KUDOS TO MR. EDWARD DRINKS & MRS. CRISTIE JOHNSON...YOU ROCK!!!

